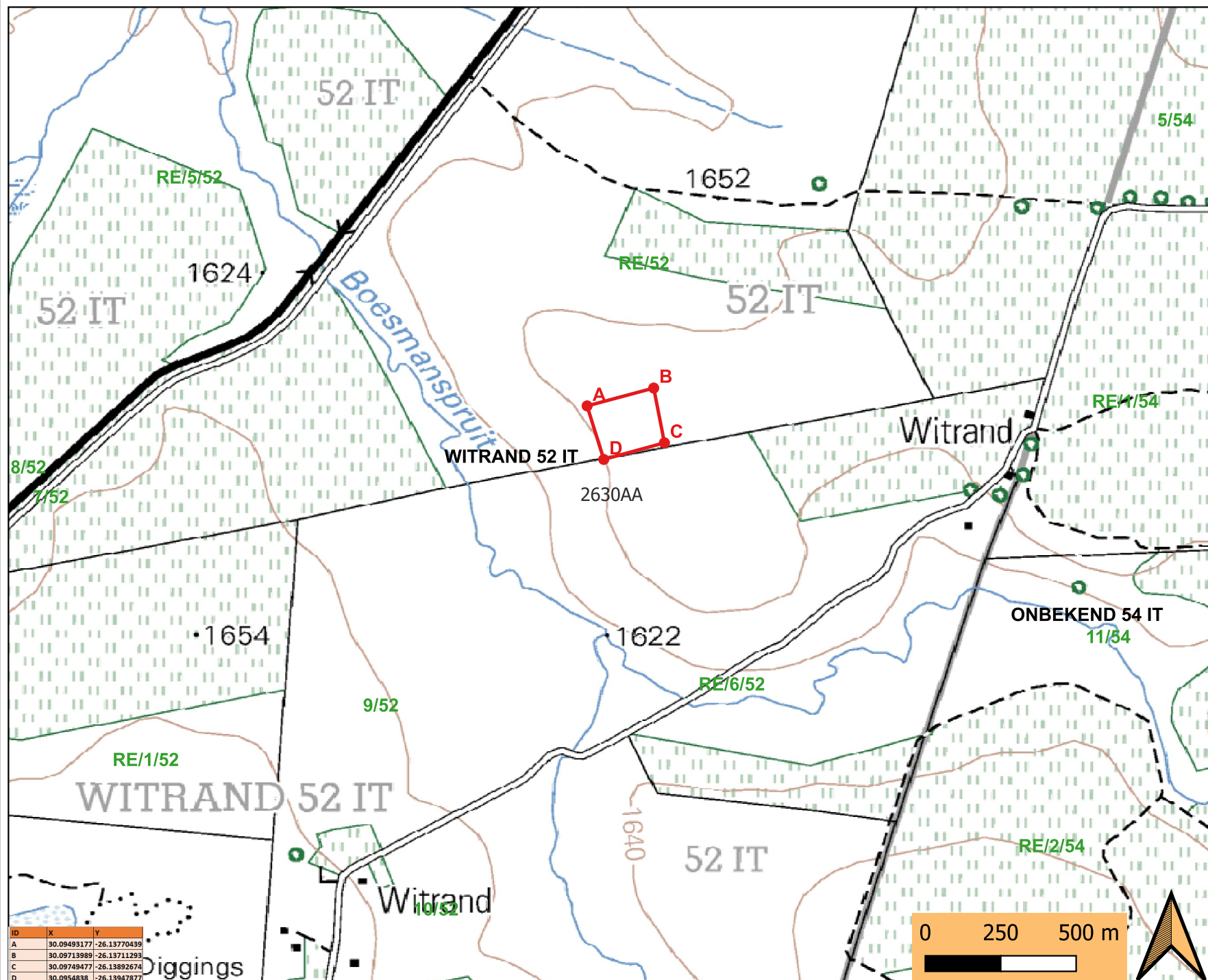


Regulation 2.2 map or a mining permit application on portion of portion RE/52 of the farm Witrand 52 IT (5 ha) situated within the Magisterial District of Carolina, Mpumalanga Province



**Applicant: New Era Versions (Pty) Ltd**

**LEGEND**

- Coordinates
- New Era MP.

Plan compiled in accordance with Regulation 2 (2) of the MPRDA, 2002, (Act 20 of 2002). In accordance with Section 48 (2) of the MPRDA, NWA (1998), NEMA (1998) (2002) and Regulation 17 of Mine Health and Safety Act (1996), the Area excludes any area within a horizontal distance of 100 metres of any Watercourses, Wetlands, Protected Areas, Public Roads, Railways & Cemeteries

International Boundary and Beacon	
Provincial Boundary	
Game, Nature Reserve & State Forest Boundary	
Perennial River	
Perennial Water	
Non-perennial River	
Non-perennial Water	
Dry Water Course	
Dry Pan	
Marsh and Vlei	
Pipeline (above ground)	
Water Tower; Reservoir; Water Point	
Coastal Rocks	
Prominent Rock Outcrop	
Erosion; Sand	
Woodland	
Cultivated Land	
Orchard or Vineyard	
Recreation Ground	
Row of Trees	
National Freeway; National Route	
Arterial Route	
Main Road	
Secondary Road; Bench Mark	
Other Road; Bridge	
Track and Hiking Trail	
Railway; Station or Siding	
Other Railway; Tunnel	
Embankment; Cutting	
Power Line	
Built-up Area	
Buildings; Ruin	
Post Office; Police Station; Store	
Place of Worship; School; Hotel	
Fence; Wall	
Windpump; Monument	
Communication Tower	
Mine Dump; Excavation	
Trigonometrical Station; Marine Beacon	
Lighthouse and Marine Light	
Cemetery; Grave	

ID	X	Y
A	30.09493177	-26.13770439
B	30.09713989	-26.13711293
C	30.09749477	-26.13892674
D	30.0954838	-26.13947877

